



DS1625

single channel soundmasking amplifier for 70.7 volt systems

tech spec_sheet
The industry's largest supplier of design-build soundmasking solutions

Features:

- Single-channel amplifier rated at 250 Watts of continuous power - 70.7 volts
- Rack mounted 2 RU (3-1/2" high)
- Balanced input on rear panel via pluggable connectors
- High pass filter on rear panel
- Short circuit and thermal protection with automatic reset
- Variable speed fan and flow-through ventilation
- UL /C-UL listed.



Description:

The DS1625 is a dedicated single-channel amplifier that delivers 250 Watts of power into a 70.7 volt soundmasking speaker system. The DS1625 is designed for reliable service in permanent installations demanding continuous use and comes complete with short-circuit and thermal protection with an automatic reset. Input sensitivity selectors, gain controls, and high-pass filter selectors are located on the rear panel to deter tampering.

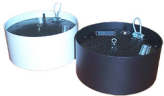
Specifications:

| | |
|--------------------|---|
| Output: | 250 watts - single channel. 70.7volt and 25 volt output |
| Power consumption: | 900 watts, 120 volts 60 Hz. |
| Frequency Response | 20-20kHz (filter bypassed) |
| Input impedance | 20k ohms balanced - 10k ohms unbalanced |
| Dimensions: | 2 RU tall 19" rack mount 8 1/2 inches deep |
| Weight: | 24 lbs. |

Architect's Specification:

The amplifier shall be a Dynasound DS1625. The power amplifier shall provide single channel, reliable continuous power of 250 Watts via an internal transformer, at 8 ohm, 70V, 25V outputs. Balanced or unbalanced input shall be selectable via rear panel switch. Input sensitivity, of either 775mV or 300mV, shall be selectable via rear panel switch, and a screw-driver adjustable level control shall be included. A high-pass filter of 12dB/octave @ 125Hz shall be selectable via rear panel switch. Short-circuit and thermal protection circuitry shall be provided. Signal/peak and temp/fault indicators shall be provided. Amplifier cooling shall be by means of an internal variable speed fan. Frequency Response shall be +0/-1dB from 20Hz to 20kHz. THD shall be less than 0.2% from 20Hz to 20kHz at rated power to the 4 ohm direct output, and less than 1.0% from 100Hz to 15kHz at rated power to any transformer output. Signal-to-Noise Ratio shall be greater than 90dB from 20Hz to 20kHz at rated power to the 4 ohm direct output. Power consumption shall be less than 900 Watts. Dimensions shall be 3.5 inches (2 rack spaces) high, 19 inches wide, and 8.5 inches deep. The amplifier shall be UL/C-UL listed.

Use with:



DS1338 Speakers



DS1390 Speakers



DS2400 Maskers



DS2500 Maskers



DSRMP-Attenuator